



## FEATURES:

---



14 Occupancy



5 Bedroom



2 Bathroom



4 Car Parking



Dish Washer



Washing Machine

## ABOUT THIS PROPERTY

---

Lawlers apartments have been a long-standing favourite with groups and families for many years due to their proximity to the centre of the Hotham Village, chair lifts, shuttle bus, restaurants and bars that we have to offer.

Lawlers 17 is a large 5 bedroom apartment with three queen bedrooms and two further bedrooms with two sets of bunks in each.

This apartment now comes with four reserved car parks in the Lawlers Private car park. **Resort access permits are still required through Alpine Easy Access for the duration of your stay.**

If location matters and having an area where there is space where the kids can play in the snow, look no further than Lawlers 17. This apartment has a strong following of families each year given the bedroom layouts and proximity to Hotham Central.

**Check-In:** After 4pm **Check-out:** Before 10am

**Over Snow:** 2 trips IN and 2 trips OUT included to assist with your luggage.

[Click Here To See Mt Hotham Village Directory](#)

## KITCHEN & COOKING FACILITIES

---

Full Kitchen - Oven, Dishwasher, Microwave, Full Size Fridge

## BEDROOMS & BEDDING CONFIGURATION

---

Bedroom 1: 1 x Queen Bed

Bedroom 2: 1 x Queen Bed

Bedroom 3: 1 x Queen Bed

Bedroom 4: 1 x Single Bunk Bed, 1 x King Single Bunk Bed

Bedroom 5: 1 x Single Bunk Bed, 1 x King Single Bunk Bed

## BATHROOMS

---

2 x Bathrooms

## HEATING & COOLING FACILITIES

---

Hydronic Heating throughout & Electric Wall Panels.

## LAUNDRY DETAILS

---

- Washing Machine
- Dryer

## ENTERTAINMENT FACILITIES



---

LCD TV, DVD Player, Sound System.

TV & DVD in each Bedroom.

## PARKING

---

4 x Lawlers overnight car park - **Resort Entry will need to be purchased**

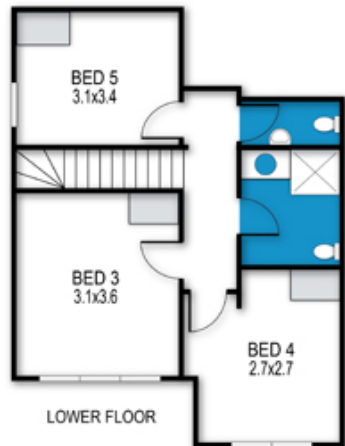
## SMOKING

---

This is a Non-Smoking Apartment

## Lawlers Apartments, Apartment 17

17/Building 4 - Lawlers Court, Mount Hotham



archistyle

Whilst every attempt has been made to ensure the accuracy of this floorplan, measurements of doors, windows, rooms and any other items are approximate only. The producer or the agent cannot be held responsible for any errors, omissions or misstatements. This plan is for illustrative purposes only and should be used as such.

# Lawlers 17

17/Building 4 - Alfonso Walk, Hotham Heights, VIC. 3741



MT HOTHAM  
ACCOMMODATION

