



FEATURES:



14 Occupancy



4 Bedroom



2 Bathroom



1 Car Parking



Dish Washer



Strict NO Party Policy



Strict NO Pets Accepted



Full Kitchen



Linen Included



Microwave



Washing Machine



Family Friendly



Full Size Fridge



Tumble Dryer



## ABOUT THIS PROPERTY

---

Lawlers apartments have been a long time favourite for families visiting Mt Hotham.

Located only a short stroll from Hotham Central and the Village Chair, these great apartments offer guests premium location on the mountain.

Lawlers 6 is a four-bedroom, two-bathroom apartment with spectacular views of The Drift and Summit.

All Linen, Bedding, Towels and a starter pack of Bathroom Amenities are provided

## KITCHEN & COOKING FACILITIES

---

Full kitchen

Full Espresso Machine

4 Burner Cooker

Sandwich Press

Microwave

Full Size Fridge

Dishwasher

## BEDROOMS & BEDDING CONFIGURATION

---

Bedroom 1: 1 x Queen Bed & 1 x Single Bunk Beds

Bedroom 2: 1 x Queen Bed & 1 x Single Bunk Beds

Bedroom 3: 1 x Queen Bed & 1 x Single Bunk Beds

Bedroom 4: 1 x Single Bed & 1 x Single trundle

## BATHROOMS

---

Two bathrooms and 3 toilets

## HEATING & COOLING FACILITIES

---

Hydronic Heating

## LAUNDRY DETAILS

---

Drying Room/Cupboard

Washer Dryer Combo

## ENTERTAINMENT FACILITIES

---

TV Flat Screen 50" Plus

TV in Multiple Rooms

## PARKING



---

1 x Lawlers Car Park Pass

## PETS

---

Pets are not accepted in this apartment.

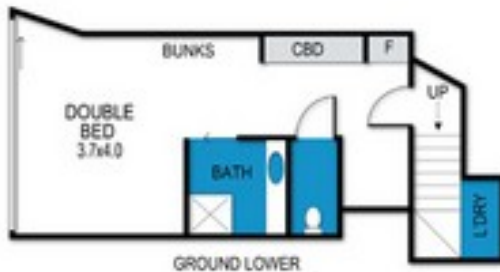
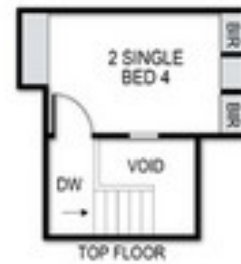
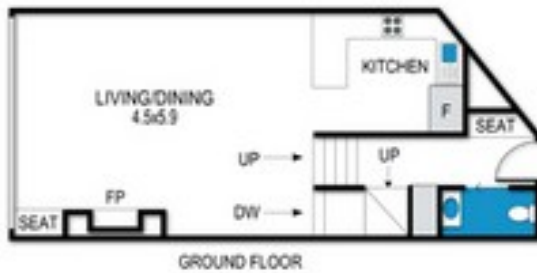
## SMOKING

---

This is a Non-Smoking Apartment.

## Lawlers Apartments, Apartment 6

6\_2 Lawlers Court, Mt Hotham



archistyle

Whilst every attempt has been made to ensure the accuracy of this floorplan, measurements of doors, windows, rooms and any other items are approximate only. The producer or the agent cannot be held responsible for any errors, omissions or misstatements. This plan is for illustrative purposes only and should be used as such.

