

# Chalet Hotham 5

5/1 Lawlers Court, Hotham Heights, VIC. 3741



## FEATURES:

---



4 Occupancy



1 Bedroom



1 Bathroom



Dish Washer



WIFI Internet



Washing Machine

## ABOUT THIS PROPERTY

---

Chalet Hotham has been a landmark at Mount Hotham for many years. It is sited in one of the best locations available offering unsurpassed views. This development has been planned and undertaken to provide the very best in on snow accommodation. The apartments have been designed to include all modern appliances and fittings.

**Check-In:** After 4pm **Check-out:** Before 10am.

**Over Snow:** 1 trip IN and 1 trip OUT included to assist with your luggage.

[Click Here To See Mt Hotham Village Directory](#)

## KITCHEN & COOKING FACILITIES

---

Full Kitchen: Oven, Microwave, Dishwasher, Bar Size Fridge, Tea & Coffee,

## BEDROOMS & BEDDING CONFIGURATION

---

Bedroom 1: 1 x King\*

Lounge: 1 x Double fold-out sofa

\*King can be split into 2 single beds, please call the office to request

## BATHROOMS

---

1 x Bathroom with heated towel rails, spa bath & bathroom amenities

## HEATING & COOLING FACILITIES

---

- Gas Log Fire
- Hydronic Heating

## LAUNDRY DETAILS

---

- Washing Machine
- Dryer

## ENTERTAINMENT FACILITIES

---

TV, DVD Player, Sound System

## EXTRA FACILITIES

---

- Wifi
- Private Ski locker
- Personal Drying Cupboard

## PARKING

---

Hotham overnight car parking - **Resort Entry will need to be purchased**

# Chalet Hotham 5

5/1 Lawlers Court, Hotham Heights, VIC. 3741

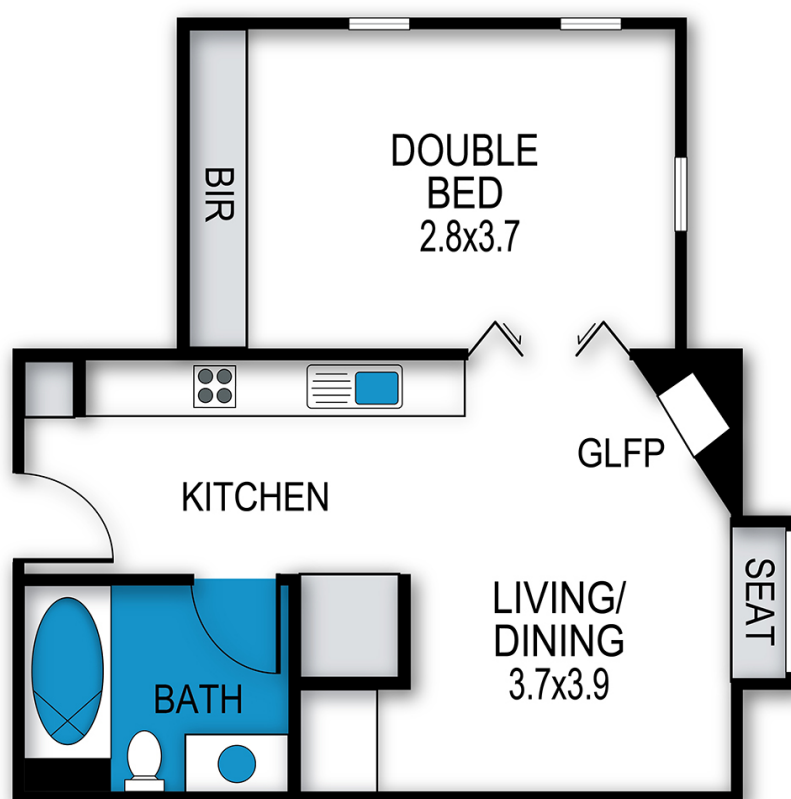


## SMOKING

This is a Non-Smoking Apartment

## Chalet Hotham, Apartment 5

5/1 Lawlers Court, Mount Hotham



archistyle

Whilst every attempt has been made to ensure the accuracy of this floorplan, measurements of doors, windows, rooms and any other items are approximate only. The producer or the agent cannot be held responsible for any errors, omissions or misstatements. This plan is for illustrative purposes only and should be used as such.

# Chalet Hotham 5

5/1 Lawlers Court, Hotham Heights, VIC. 3741



MT HOTHAM  
ACCOMMODATION

