



FEATURES:



6 Occupancy



2 Bedroom



1 Bathroom

ABOUT THIS PROPERTY

This two bedroom cozy apartment on the ground floor of Alpine Heights is the perfect private space for a family or group of friends to come back to after a big day of hitting the slopes.

Check-In: After 4pm Check-out: Before 10am.

Over Snow: 1 trip IN and 1 trip OUT included to assist with your luggage.

KITCHEN & COOKING FACILITIES

Full Kitchen
Full Size Fridge
Dishwasher
Microwave
Coffee Pod Machine - Aldi Expresso Pods
Full Size Oven
4 Burner Cooker
Sandwich Press
Air Fryer
Electric Frypan
Rice Cooker
Slow Cooker
Stick Mixer
Toaster

BEDROOMS & BEDDING CONFIGURATION

This property sleeps 6 people. There are 2 Bedrooms with the following configuration.

Bedroom 1: 1 x Queen Bed and 1x Bunk Bed

Bedroom 2: 1x Bunk Bed

Linen, Towels and Bedding is provided for all beds.

BATHROOMS

One Bathrooms

HEATING & COOLING FACILITIES

Hydronic heating

LAUNDRY DETAILS

Guest Laundry - Coin Operated



ENTERTAINMENT FACILITIES

Bluetooth Speaker
Board Games
TV Flat Screen 40" Plus

EXTRA FACILITIES

Communal facilities within the building include:

Swimming Pool
Spa
Sauna
Communal Drying Room

PARKING

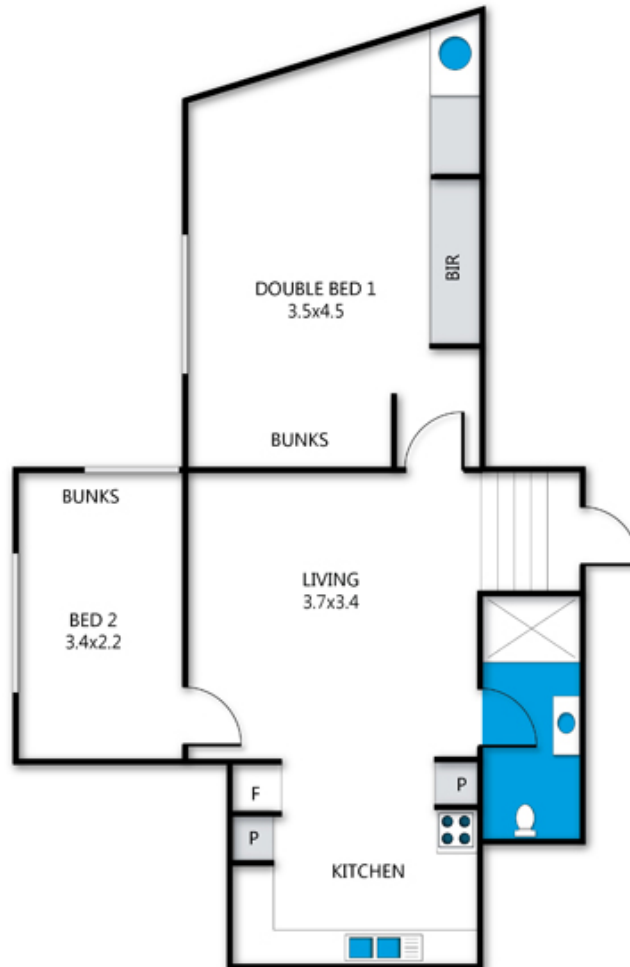
Hotham overnight car parking - **Resort Entry will need to be purchased**

SMOKING

This is a Non-Smoking Apartment

Alpine Heights, Apartment 11B

11B_6 Lawlers Court, Mt Hotham



archistyle

Whilst every attempt has been made to ensure the accuracy of this floorplan, measurements of doors, windows, rooms and any other items are approximate only. The producer or the agent cannot be held responsible for any errors, omissions or misstatements. This plan is for illustrative purposes only and should be used as such.