



## FEATURES:

---



7 Occupancy



2 Bedroom



2 Bathroom



1 Car Parking



Dish Washer



Washing Machine

## ABOUT THIS PROPERTY

---

Lawlers apartments have been a long-standing favourite with groups and families for many years due to their proximity to the centre of the Hotham Village, chair lifts, shuttle bus, restaurants and bars that Hotham has to offer. Lawlers 45 is a two-bedroom, two-bathroom apartment with excellent views with a private balcony. There is also one car space provided in the Lawlers car park for your convenience.

**Check-In:** After 4pm **Check-out:** Before 10am

**Over Snow:** 1 trip IN and 1 trip OUT included to assist with your luggage.

[Click Here To See Mt Hotham Village Directory](#)

## KITCHEN & COOKING FACILITIES

---

Oven, Microwave, Dishwasher, Full Size Fridge

## BEDROOMS & BEDDING CONFIGURATION

---

Bedroom 1: 1 x Queen Bed & 1 x King Single bed in loft above

Bedroom 2: 1 x King Single Bunk Bed & 1 X Single Bunk Bed

## BATHROOMS

---

2 x Bathrooms

## HEATING & COOLING FACILITIES

---

Hydronic Central Heating

## LAUNDRY DETAILS

---

Washing Machine and Dryer

## ENTERTAINMENT FACILITIES

---

TV, DVD Player

## EXTRA FACILITIES

---

Personal Drying Cupboard

## PARKING

---

1 x Lawlers overnight car park - Resort Entry will need to be purchased

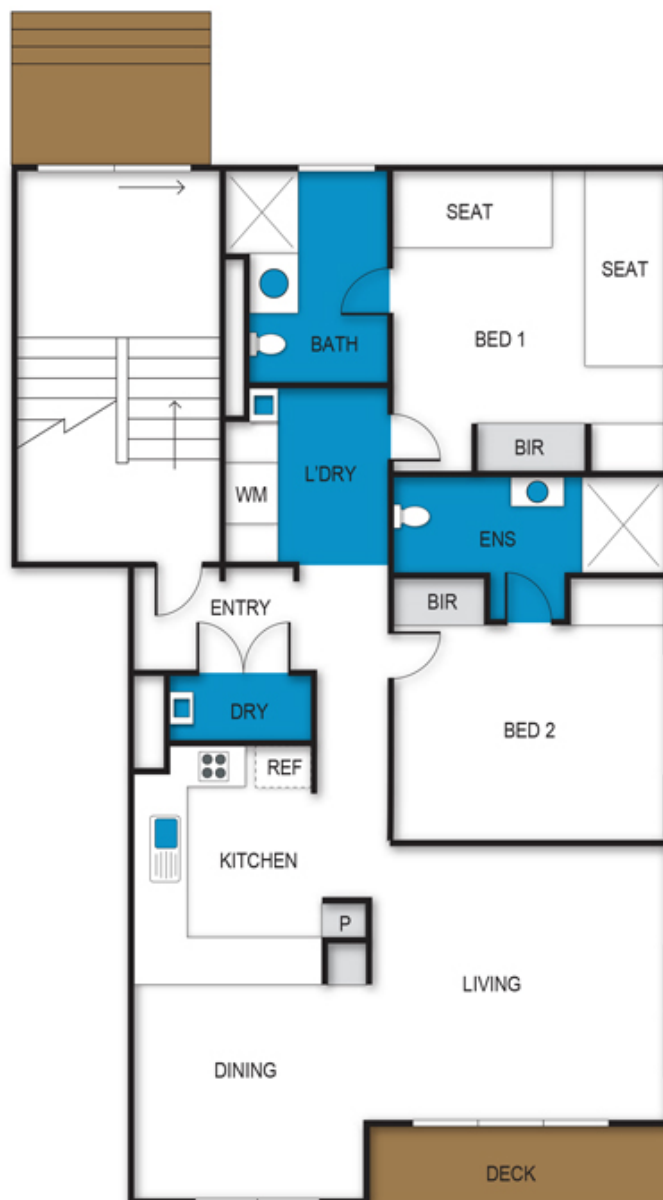
## SMOKING

---

This is a Non-Smoking Apartment

## Lawlers Apartments, Apartment 45

45/Building 5, Lawlers Court, Mount Hotham



archistyle

Whilst every attempt has been made to ensure the accuracy of this floorplan, measurements of doors, windows, rooms and any other items are approximate only. The producer or the agent cannot be held responsible for any errors, omissions or misstatements. This plan is for illustrative purposes only and should be used as such.

# Lawlers 45

45/Building 5 - Alfonso Walk, Hotham Heights, VIC. 3741



MT HOTHAM  
ACCOMMODATION

