

1750 Hotham - 12

12/5 Higgi Drive, Hotham Heights, VIC. 3741



FEATURES:



8 Occupancy



3 Bedroom



2 Bathroom



1 Car Parking



Dish Washer



Washing Machine

ABOUT THIS PROPERTY

Hotham 1750 apartments offer some of the best views at Hotham- Apartment 12 is a north-facing and is within easy reach of Hotham central, village bus and all the restaurants and bars. There is a private balcony from which you can look down to the village and across to the beautiful mountain range. Access to the apartment is now even easier with the addition of a car park. You can drive right up the to the entranceway and unload the car at your own pace. **Resort access permits are still required through Alpine Easy Access for the duration of your stay.**

Check-In: After 4pm **Check-out:** Before 10am

[Click Here To See Mt Hotham Village Directory](#)

KITCHEN & COOKING FACILITIES

Oven, Microwave, Full Size Fridge, Dishwasher, Nespresso Coffee Machine (Pods not supplied)

BEDROOMS & BEDDING CONFIGURATION

Bedroom 1: 1 x King Bed

Bedroom 2: 1 x Queen Bed

Bedroom 3: 2 x Single Bunk Beds (4 Singles)

BATHROOMS

2 x Bathrooms

HEATING & COOLING FACILITIES

Gas Log Fire

LAUNDRY DETAILS

- Washing Machine
- Dryer

ENTERTAINMENT FACILITIES

TV, DVD Player

PARKING

1750 Hotham car park- **Resort Entry will need to be purchased**

SMOKING

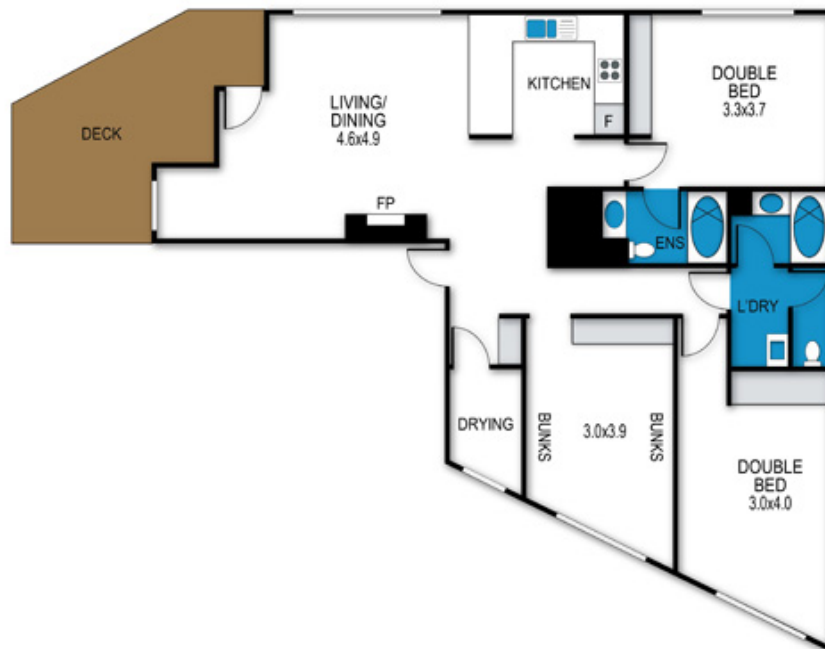
This is a Non-Smoking Apartment

1750 Hotham - 12

12/5 Higgi Drive, Hotham Heights, VIC. 3741

1750 Hotham 12

5 Higgi Drive, Hotham



archistyle

Whilst every attempt has been made to ensure the accuracy of this floorplan, measurements of doors, windows, rooms and any other items are approximate only. The producer or the agent cannot be held responsible for any errors, omissions or misstatements. This plan is for illustrative purposes only and should be used as such.

1750 Hotham - 12

12/5 Higgi Drive, Hotham Heights, VIC. 3741



MT HOTHAM
ACCOMMODATION

