

1-8 Hot Plate

8 Hot Plate Drive, Hotham Heights



FEATURES:



12 Occupancy



4 Bedroom



4 Bathroom

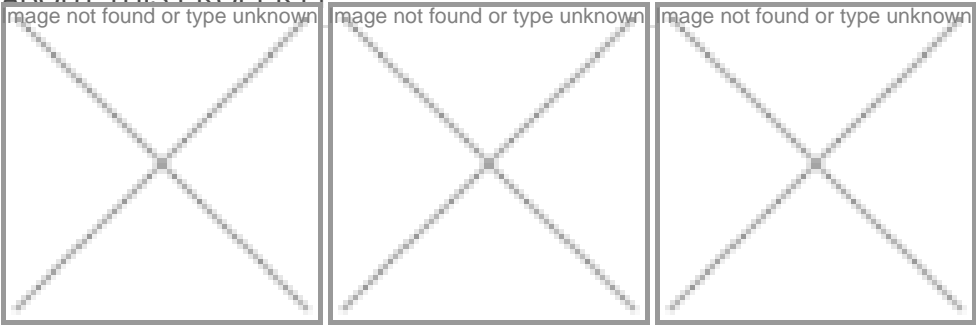


1 Car Parking



Spa Bath

ABOUT THIS PROPERTY



1-8 Hot Plate is a truly unique property that sleeps up to 14 people in a free-standing chalet spanning across 4 levels, additionally equipped with an outdoor hot tub and a sauna.

Located just a very short walk to Hotham Central, the house features a modern kitchen, four bedrooms, four bathrooms, a theatre room and an outdoor spa & sauna. The North facing windows in the living, dining & most bedrooms keep the house warm and bright. The open living & dining area allows you to host up to 14 people for dinner and provides a large modular sofa & balcony with fantastic views.

A reserved undercover gated car park right at the front door of the property makes your arrival and departure at 1-8 Hotplate one of the easiest on the mountain. The chalet is within walking distance to chair lifts, the bus stop, the main car park, restaurants, shops, bars, ticket office & more.

This fantastic mountain holiday home gives you the opportunity to Ski in & out from your back door and spend the afternoon making use of the spa & sauna while you take in the mountain views.

Linen & Towels Supplied.

Resort access permits are required for the duration of your stay in the Snow Season.

Please contact us directly if you are a Veteran or part of the ADF, RAN, RAAF or IDF (Isreal Defence Force) as discounts will apply

Check-In: After 4pm Check-out: Before 10am

KITCHEN & COOKING FACILITIES

- Full Kitchen
- Dishwasher
- Microwave
- Coffee Pod Machine
- Full Size Oven
- 4 Burner Cooker
- Quality Miele Appliances, Breville Nespresso Creatista with pods

Welcome kit - initial supply of, tea & coffee, toilet paper, toiletries, dishwashing liquid

BEDROOMS & BEDDING CONFIGURATION

This property had beds that sleep 12 people.

There are 4 Bedrooms with the following configuration,

- Bedroom 1: 1 x King Bed, ensuite
- Bedroom 2: 1 x King Bed, ensuite
- Bedroom 3: 1 x Queen Bed
- Bedroom4: 2 x Single Beds, 2 x Bunk Beds (6 Singles in total)

There is additional sofa beds to sleep another two guests

Linen, Towels and Bedding is provided for all beds.

BATHROOMS

Four bathrooms

The main bathroom has a bath

Bedroom 1 and 2 both have ensuite bathrooms

Hairdryer

2 x Stand alone toilets

Under Tile Heating in 2 bathrooms

HEATING & COOLING FACILITIES

Electric Panel Heating

Combustion Wood Log Fire

Under Tile Heating in 2 bathrooms

LAUNDRY DETAILS

Washing Machine

Tumble Dryer

Basin

ENTERTAINMENT FACILITIES

Collection of Books

DVD Player

Foxtel

Starlink WIFI

Media/theatre room with 52inch Smart TV & Xbox 36

Smart TV - Over 60 Inch

Multiple Smart TV's

Google Nest

Sony Stereo with iPod dock, Nintendo Switch, USB C ultra fast charging connectors in most rooms

EXTRA FACILITIES

Outdoor spa with WIFI speakers

4 Person North Facing Sauna

PARKING

Undercover car space in a heated driveway - across from the front door. One of the few properties at Mt Hotham with a heated, covered car park right at your door step

PETS

Strictly no pets allowed

1-8 Hot Plate

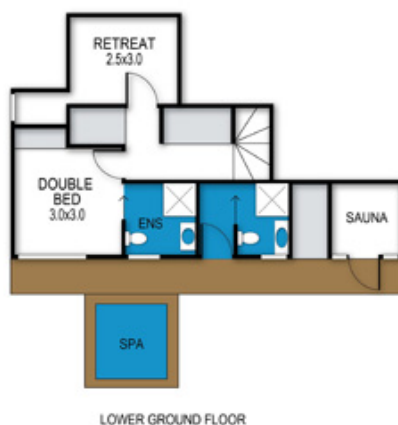
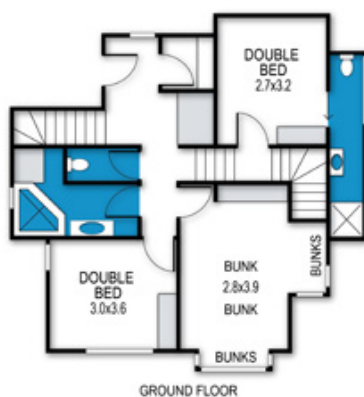
8 Hot Plate Drive, Hotham Heights

SMOKING

Strictly no smoking indoors

1-8 Hot Plate

8 Hot Plate Drive, Mount Hotham



archistyle

Whilst every attempt has been made to ensure the accuracy of this floorplan, measurements of doors, windows, rooms and any other items are approximate only. The producer or the agent cannot be held responsible for any errors, omissions or misstatements. This plan is for illustrative purposes only and should be used as such.