



## FEATURES:

---



12 Occupancy



4 Bedroom



2 Bathroom



1 Car Parking

## ABOUT THIS PROPERTY

---

Lawlers apartments have been a long-standing favourite with groups and families for many years due to their proximity to the centre of the Hotham Village, chair lifts, shuttle bus, restaurants and bars that Hotham has to offer. Lawlers 30 'Above the Clouds' is a two level, four-bedroom, two-bathroom apartment with great views. This beautifully presented apartment has a wonderful feel and you will immediately feel like you are at home in the mountains. This apartment also includes one car space in Lawler's car park. Resort access permits are still required through Alpine Easy Access for the duration of your stay.

Check-In: After 4pm Check-out: Before 10am

Over Snow: 3 trips IN and 3 trips OUT included to assist with your luggage.

## KITCHEN & COOKING FACILITIES

---

Full Kitchen  
Full Size Fridge  
Dishwasher  
Microwave  
Delonghi coffee machine - Coffee Beans Required  
6 Burner Cooker

## BEDROOMS & BEDDING CONFIGURATION

---

Bedroom 1: 1 x Double bed and 1 x set of Bunks

Bedroom 2: 2 x sets of Bunks

Bedroom 3: 1 x Double bed

Bedroom 4: 1 x Double bed

Linen, Towels and Bedding is provided for all beds.

## BATHROOMS

---

Two bathrooms. Main Bathroom with separate powder room.

Second bathroom is shared with a laundry

## HEATING & COOLING FACILITIES

---

Hydronic Heating

## LAUNDRY DETAILS

---

Washing machine and clothes dryer in second bathroom



## ENTERTAINMENT FACILITIES

---

Bluetooth Speaker  
Book Collection  
TV in Multiple Rooms:  
TV Flat Screen 60" Plus  
Wifi available in Winter

## PARKING

---

1 Allocated Lawlers Car Park

## PETS

---

Strictly no pets allowed

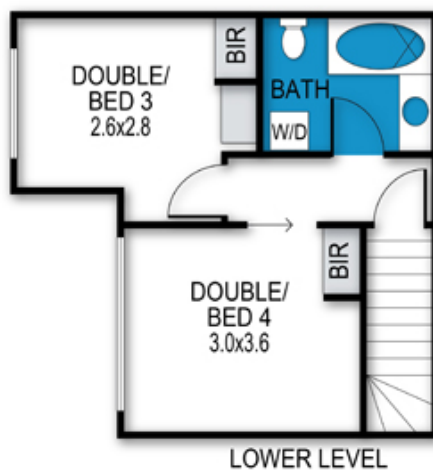
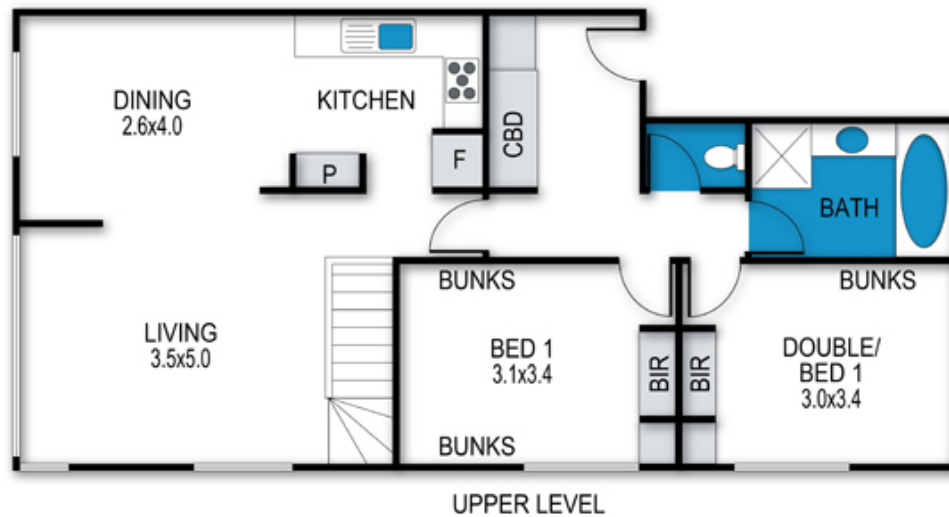
## SMOKING

---

Strictly no smoking indoors

## Lawlers Apartments, Apartment 30

30\_2 Lawlers Court, Mt Hotham



archistyle

Whilst every attempt has been made to ensure the accuracy of this floorplan, measurements of doors, windows, rooms and any other items are approximate only. The producer or the agent cannot be held responsible for any errors, omissions or misstatements. This plan is for illustrative purposes only and should be used as such.