

# Alpine Haven 3

3/13 Higgi Drive, Hotham Heights, VIC. 3741



MT HOTHAM  
ACCOMMODATION



## FEATURES:



15 Occupancy



3 Bedroom



2 Bathroom



Dish Washer



Strict NO Party Policy



Strict NO Pets Accepted



Linen Included



Washing Machine



Family Friendly

## ABOUT THIS PROPERTY

---

Alpine Haven 3 is in the popular Alpine Haven complex, only a short walk away from Hotham Central. The second living room with a TV is perfect for entertaining the kids. Downstairs, there is an open living area including a kitchen, dining and lounge area which is bathed in the sun on those beautiful bluebird days. The large private balcony is perfect for alfresco dining and allows guests to enjoy the spectacular scenery of the mountains.

**Check-In:** After 4pm **Check-out:** Before 10am

Check-in details will be sent via SMS after 4pm on the day of your arrival

**Over Snow:** 3 trips IN and 3 trips OUT included to assist with your luggage.

[Click Here To See Mt Hotham Village Directory](#)

## KITCHEN & COOKING FACILITIES

---

Oven, Microwave, Full Size Fridge, Dishwasher, Gas cook top, Nespresso coffee machine (pods not supplied)

## BEDROOMS & BEDDING CONFIGURATION

---

Bedroom 1: 1 x Queen Bed

Bedroom 2: 1 x Trilogy Bunk Bed

Bedroom 3: 2 x Single Bunk beds

Family room: 1 x Queen Bed, 1 x Double Bed & 1 x Single Bunk Bed

## BATHROOMS

---

2 x Bathrooms.

Ensuite with shower and toilet.

Family bathroom has a shower over a bath tub.

Separate toilet.

## HEATING & COOLING FACILITIES

---

Gas Log Fire and Central heating

## LAUNDRY DETAILS

---

Washing Machine and Dryer

## ENTERTAINMENT FACILITIES

---

TV, DVD Player, Sound System, Table Tennis Table

## EXTRA FACILITIES

---



Drying Cupboard

Ski Lockers at entry

## PARKING

---

Hotham overnight car parking - **Resort Entry will need to be purchased**

## SMOKING

---

This is a Non-Smoking Apartment

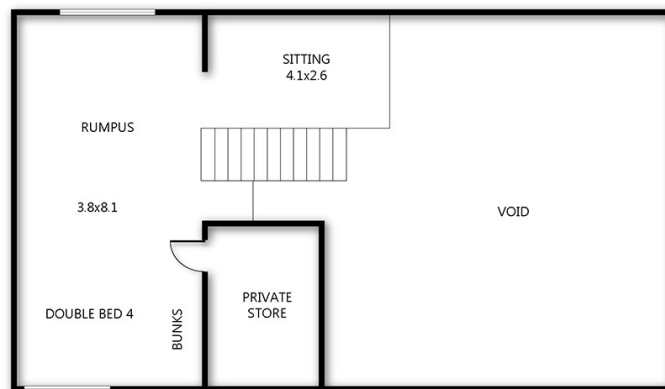
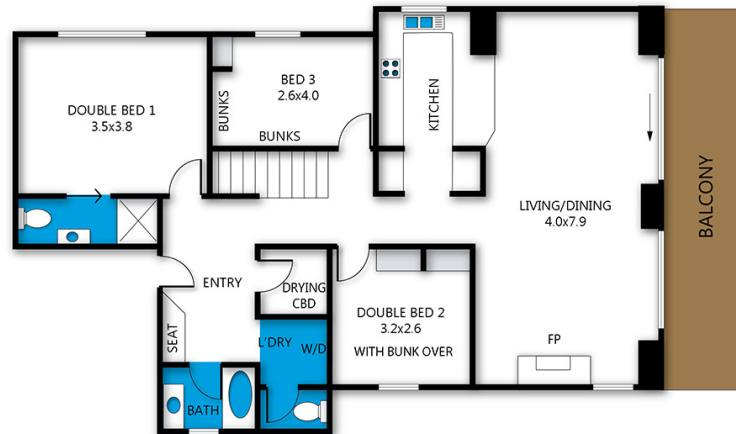
# Alpine Haven 3

3/13 Higgi Drive, Hotham Heights, VIC. 3741



## Alpine Haven 3

3/13 Higgi Drive, Mt Hotham



archistyle

Whilst every attempt has been made to ensure the accuracy of this floorplan, measurements of doors, windows, rooms and any other items are approximate only. The producer or the agent cannot be held responsible for any errors, omissions or misstatements. This plan is for illustrative purposes only and should be used as such.

# Alpine Haven 3

3/13 Higgi Drive, Hotham Heights, VIC. 3741



MT HOTHAM  
ACCOMMODATION

