



## FEATURES:

---



4 Occupancy



1 Bedroom



1 Bathroom



1 Car Parking



Dish Washer



Washing Machine

## ABOUT THIS PROPERTY

---

Lawlers apartments have been a long-standing favourite with groups and families for many years due to their proximity to the centre of the Hotham Village, chair lifts, shuttle bus, restaurants and bars that Hotham has to offer. Lawlers 31 is a one-bedroom apartment with a private balcony and excellent views, here is also one car space in Lawlers car park for your convenience. **Resort access permits are still required through Alpine Easy Access for the duration of your stay.**

**Check-In:** After 4pm **Check-out:** Before 10am

**Over Snow:** 2 trips IN and 2 trips OUT included to assist with your luggage.

[Click Here To See Mt Hotham Village Directory](#)

## KITCHEN & COOKING FACILITIES

---

Full Kitchen - Oven, Microwave, Dishwasher, Full-Size Fridge

## BEDROOMS & BEDDING CONFIGURATION

---

Bedroom 1: 1 x Queen & 1 x Bunk

## BATHROOMS

---

1 x Bathroom

## HEATING & COOLING FACILITIES

---

Hydronic Central Heating

## ENTERTAINMENT FACILITIES

---

TV, DVD Player, Sound System

## PARKING

---

1 x Lawlers overnight car park - **Resort Entry will need to be purchased**

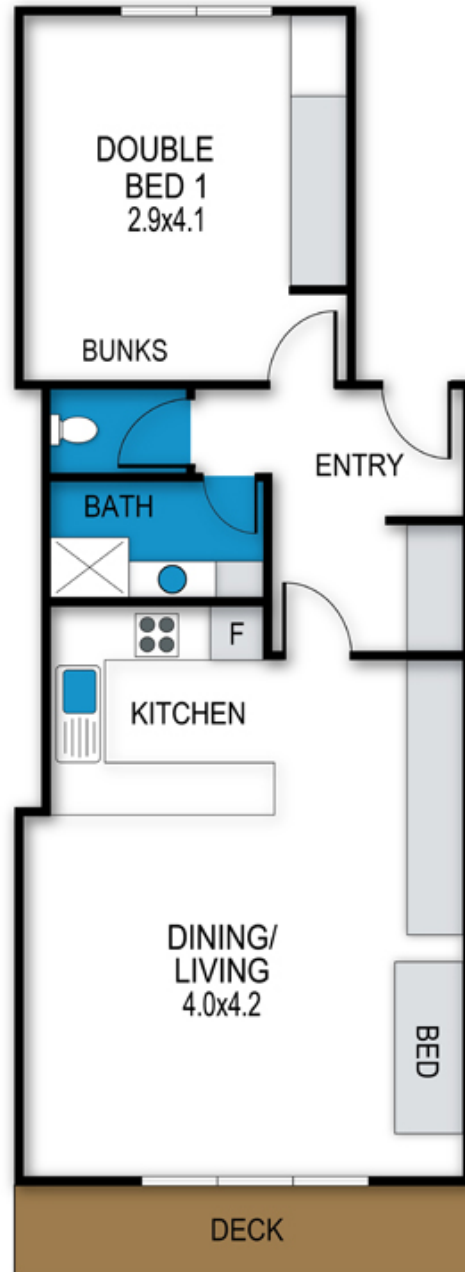
## SMOKING

---

This is a Non-Smoking Apartment

## Lawlers Apartments, Apartment 31

31/Building 4 - Lawlers Court, Mount Hotham



archistyle

Whilst every attempt has been made to ensure the accuracy of this floorplan, measurements of doors, windows, rooms and any other items are approximate only. The producer or the agent cannot be held responsible for any errors, omissions or misstatements. This plan is for illustrative purposes only and should be used as such.

# Lawlers 31

31/Building 4 - Alfonso Walk, Hotham Heights, VIC. 3741



MT HOTHAM  
ACCOMMODATION

