

# Alpine Heights 04

4/6 Lawlers Court, Hotham Heights, VIC. 3741



MT HOTHAM  
ACCOMMODATION



## FEATURES:

---



6 Occupancy



1 Bedroom



1 Bathroom

## ABOUT THIS PROPERTY

---

The One Bedroom 6 Share Apartments is perfect for families or a group of friends on a getaway. The fully equipped kitchen makes it ideal to self cater if you wish. It offers a dining and lounge area with a flat-screen TV and DVD player. There is also a drying room for your wet gear at the end of the day.

**Check-In:** After 4pm **Check-out:** Before 10am.

**Over Snow:** 1 trip IN and 1 trip OUT included to assist with your luggage.

[Click Here To See Mt Hotham Village Directory](#)

## KITCHEN & COOKING FACILITIES

---

Oven, Toaster, Electric Kettle, Kitchenware, Electric cook top, full size fridge, convection microwave

## BEDROOMS & BEDDING CONFIGURATION

---

Bedroom 1: 1 x Bunk & 1 x Tri-Bunk (Double & Single on Top) & Trundle Bed

## BATHROOMS

---

1 bathroom

## HEATING & COOLING FACILITIES

---

Hydronic Heating

## LAUNDRY DETAILS

---

Guest Laundry - Coin Operated

## ENTERTAINMENT FACILITIES

---

Flat- Screen TV, DVD Player

## EXTRA FACILITIES

---

- Swimming Pool
- Spa
- Sauna

## PARKING

---

Hotham overnight car parking - **Resort Entry will need to be purchased**

## SMOKING

---

This is a Non-Smoking Apartment

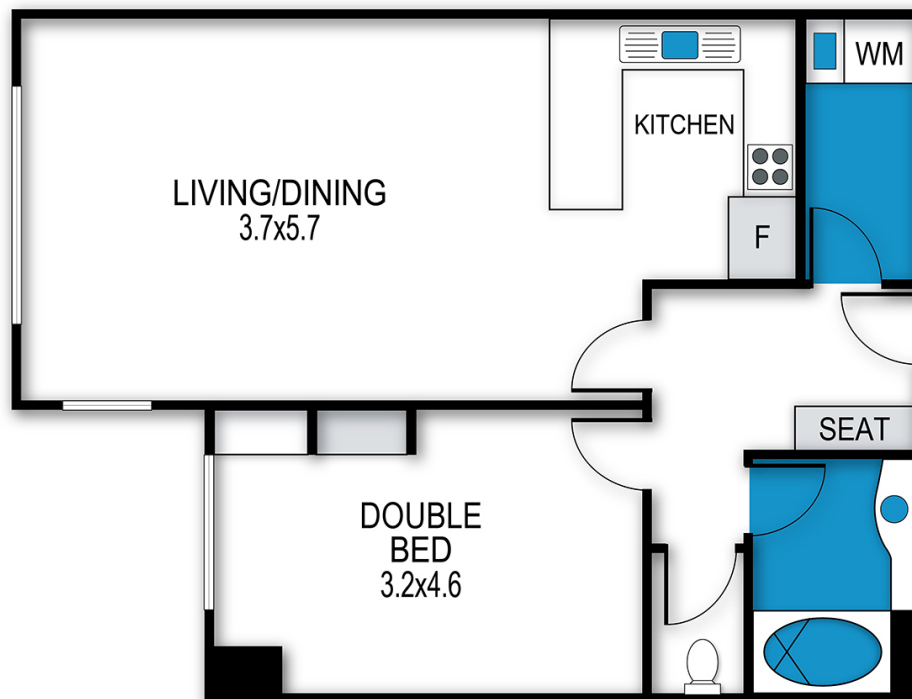
# Alpine Heights 04

4/6 Lawlers Court, Hotham Heights, VIC. 3741



## Alpine Heights, Apartment 4

4/6 Lawlers Court, Mount Hotham



archistyle

Whilst every attempt has been made to ensure the accuracy of this floorplan, measurements of doors, windows, rooms and any other items are approximate only. The producer or the agent cannot be held responsible for any errors, omissions or misstatements. This plan is for illustrative purposes only and should be used as such.

# Alpine Heights 04

4/6 Lawlers Court, Hotham Heights, VIC. 3741



MT HOTHAM  
ACCOMMODATION

