



## FEATURES:

---



6 Occupancy



2 Bedroom



1 Bathroom

## ABOUT THIS PROPERTY

---

This two bedroom cozy apartment on the ground floor of Alpine Heights is the perfect private space for a family or group of friends to come back to after a big day of hitting the slopes.

Check-In: After 4pm Check-out: Before 10am.

Over Snow: 1 trip IN and 1 trip OUT included to assist with your luggage.

## KITCHEN & COOKING FACILITIES

---

Full Kitchen  
Full Size Fridge  
Dishwasher  
Microwave  
Coffee Pod Machine - Aldi Expresso Pods  
Full Size Oven  
4 Burner Cooker  
Sandwich Press  
Air Fryer  
Electric Frypan  
Rice Cooker  
Slow Cooker  
Stick Mixer  
Toaster

## BEDROOMS & BEDDING CONFIGURATION

---

This property sleeps 6 people. There are 2 Bedrooms with the following configuration.

Bedroom 1: 1 x Queen Bed and 1x Bunk Bed

Bedroom 2: 1x Bunk Bed

Linen, Towels and Bedding is provided for all beds.

## BATHROOMS

---

One Bathrooms

## HEATING & COOLING FACILITIES

---

Hydronic heating

## LAUNDRY DETAILS

---

Guest Laundry - Coin Operated



## ENTERTAINMENT FACILITIES

---

Bluetooth Speaker  
Board Games  
TV Flat Screen 40" Plus

## EXTRA FACILITIES

---

Communal facilities within the building include:

Swimming Pool  
Spa  
Sauna  
Communal Drying Room

## PARKING

---

Hotham overnight car parking - **Resort Entry will need to be purchased**

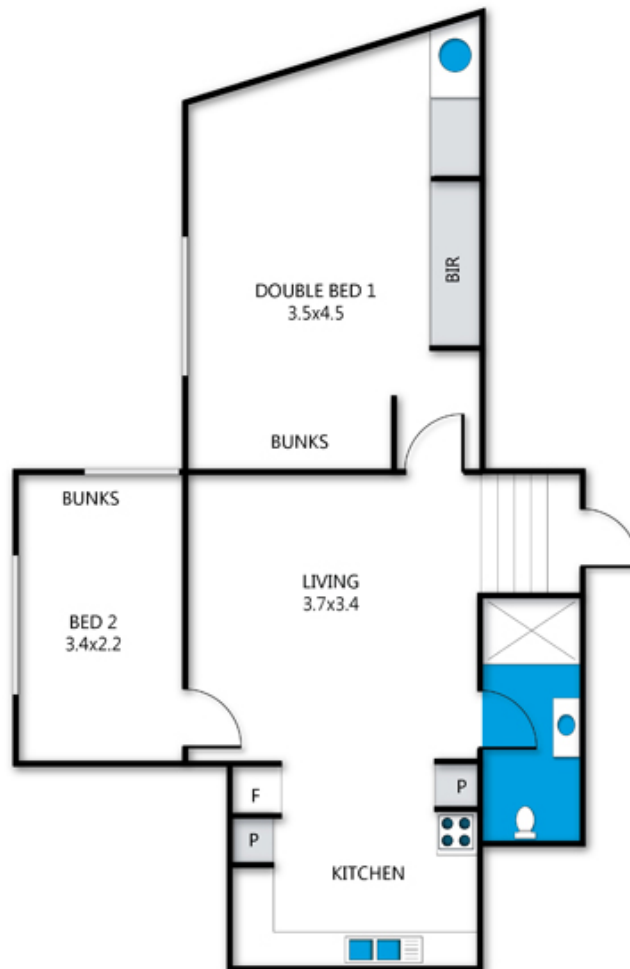
## SMOKING

---

This is a Non-Smoking Apartment

## Alpine Heights, Apartment 11B

11B\_6 Lawlers Court, Mt Hotham



archistyle

Whilst every attempt has been made to ensure the accuracy of this floorplan, measurements of doors, windows, rooms and any other items are approximate only. The producer or the agent cannot be held responsible for any errors, omissions or misstatements. This plan is for illustrative purposes only and should be used as such.