



FEATURES:



8 Occupancy



2 Bedroom



1 Bathroom



1 Car Parking



Dish Washer



Washing Machine

ABOUT THIS PROPERTY

Lawlers 34 is a two-bedroom, one-bathroom apartment with excellent westerly views. It has a full kitchen, microwave and dishwasher, large screen TV, DVD and sound system all in the kitchen living area. There is also one car space in Lawlers car park for your convenience. Resort access permits are still required through Alpine Easy Access for the duration of your stay.

Check-In: After 4pm **Check-out:** Before 10am.

Over Snow: 2 trip IN and 2 trip OUT included to assist with your luggage.

[Click Here To See Mt Hotham Village Directory](#)

KITCHEN & COOKING FACILITIES

Full Kitchen - Oven, Microwave, Full Size Fridge, Dishwasher

BEDROOMS & BEDDING CONFIGURATION

Bedroom 1: x Double Bed & 1 x Single Bunk Beds

Bedroom 2: 1 x Double Bed & 1 x Single Bunk Beds

Linen, Towels and Bedding is provided for all beds.

BATHROOMS

2 x Bathrooms

HEATING & COOLING FACILITIES

Hydronic Central Heating

LAUNDRY DETAILS

- Washing Machine
- Dryer

ENTERTAINMENT FACILITIES

TV, DVD Player, Sound System

EXTRA FACILITIES

Drying Cupboard

PARKING

1 x Lawlers overnight car park - **Resort Entry will need to be purchased**

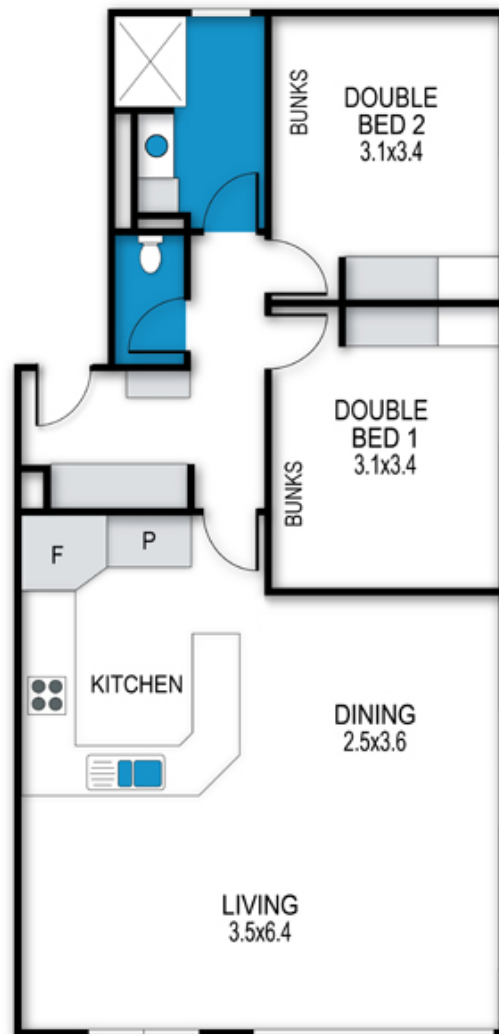


SMOKING

This is a Non-Smoking Apartment

Lawlers Apartments, Apartment 34

34/Building 4 - Lawlers Court, Mount Hotham



archistyle

Whilst every attempt has been made to ensure the accuracy of this floorplan, measurements of doors, windows, rooms and any other items are approximate only. The producer or the agent cannot be held responsible for any errors, omissions or misstatements. This plan is for illustrative purposes only and should be used as such.

Lawlers 34

34/Building 4 - Alfonso Walk, Hotham Heights, VIC. 3741



MT HOTHAM
ACCOMMODATION

